



Installation guideline FaMe test server (I)

**FaMe-FM Release 5 server
installation of
Windows 2003 server,
IIS 6,
Helicon ISAPI Rewrite 3,**

Version 1.02
13.10.2011
Project xxxx



Revisions

| | | |
|-----|--------------------------------------|------------|
| 1.0 | M. Eisenhardt, FaMe GmbH | 2.8.2011 |
| 1.1 | B. Tennigkeit, FaMe GmbH license key | 17.10.2011 |

Table of contents

| | |
|--|-----------|
| <u>TABLE OF CONTENTS</u> | 2 |
| <u>FAME-FM RELEASE 5 WEBSERVER INSTALLATION USING WINDOWS 2003 SERVER IIS 6 AND HELICON ISAPI REWRITE 3</u> | 3 |
| THE INSTALLATION PACKAGE | 3 |
| <u>PREPARATION: WEB SERVER NEEDS TO BE SET UP IN WINDOWS 2003 SERVER</u> | 3 |
| <u>IIS CONFIGURATION FOR THE FAME APPLICATION</u> | 5 |
| HELICON ISAPI REWRITE 3 | 5 |
| INSTALLATION | 5 |
| CONFIGURATION | 8 |
| INSTALLING THE LICENSE KEY FOR HELICON ISAPI REWRITE 3 | 9 |
| SETTING UP THE FAME APPLICATION DIRECTORY ON THE WEB SERVER | 10 |

FaMe-FM Release 5 Webserver installation using Windows 2003 server IIS 6 and Helicon ISAPI Rewrite 3

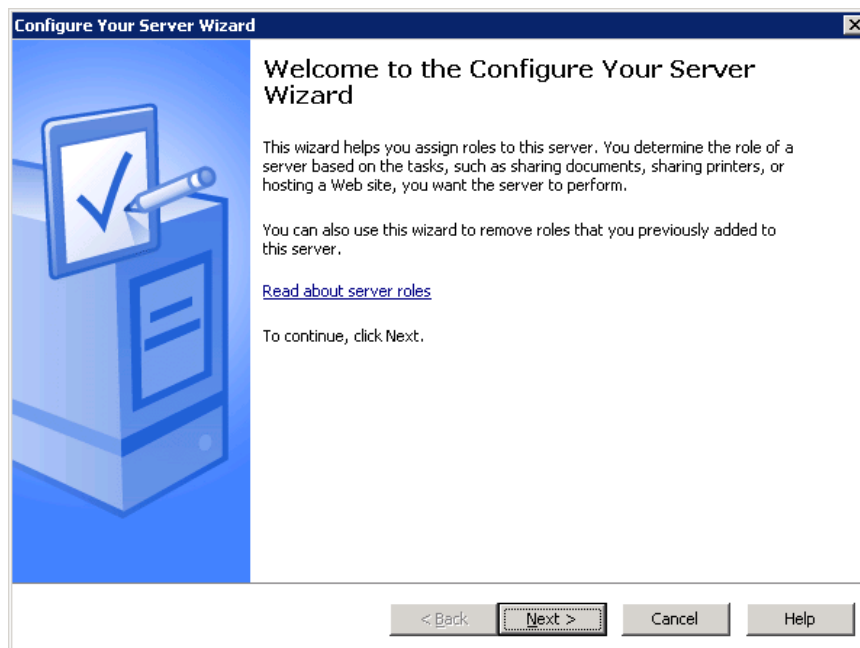
The installation package

Files for installation

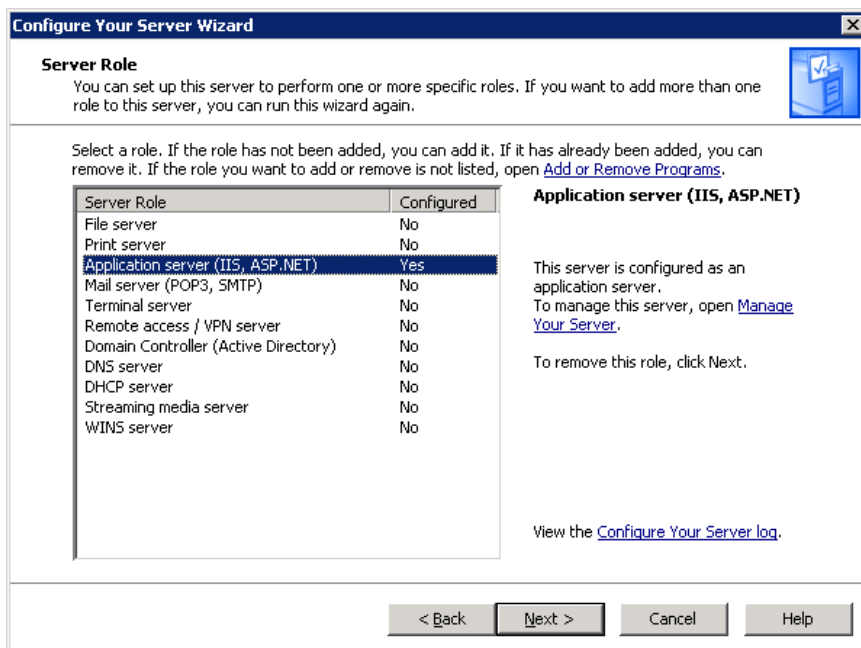
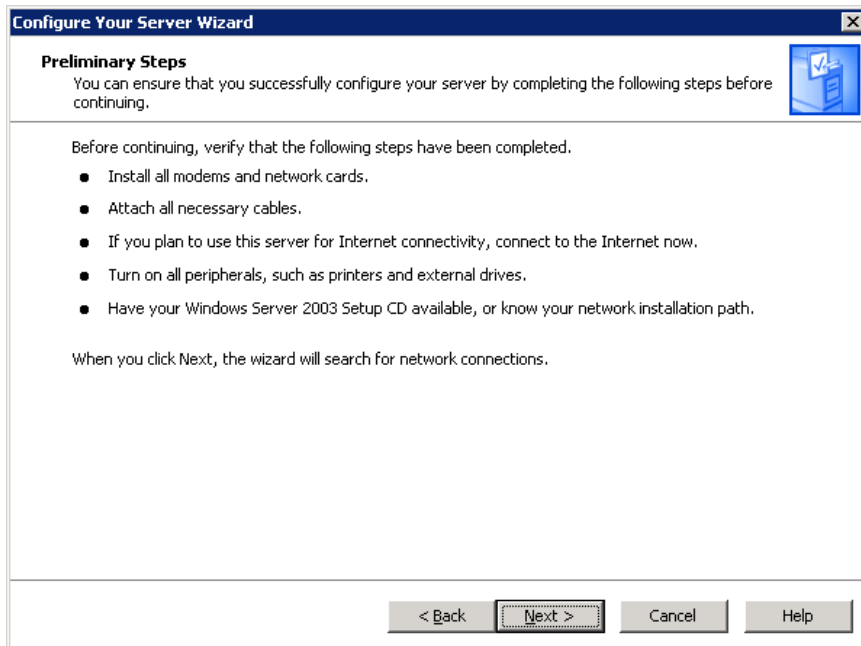
- Static webserver files *in folder "static files"*
- Helicon ISAPI Rewrite 3 *in folder "Helicon ISAPI Rewrite 3"*
- httpd.conf for ISAPI Rewrite 3 *in folder httpd.conf*
- This file *in folder documentation*

Preparation: web server needs to be set up in Windows 2003 server

(Start-Administrative Tools-Configure your Server wizard)



FaMe Installation Guideline TEST Server (I)



Needed here is the IIS. All others are not necessary for the FaMe system. Have the Windows 2003 server install CD at hand in case IIS is not installed.

IIS configuration for the FaMe application

As a web server the IIS is deployed. It has to supply the static content of the FaMe application as well as dynamic content generated server-side, but the content is just supplied by the IIS, not generated. Instead, the content is delivered by the database itself, and the IIS connects to the Oracle listener to retrieve dynamic content.

Since the IIS does not provide a reverse proxy function by itself, the Helicon ISAPI Rewrite 3 module is deployed. This module extends IIS by the functions known from the Apache mod_rewrite module and can handle reverse proxy requests to external servers.

Helicon ISAPI Rewrite 3

This module can be obtained from

http://www.helicontech.com/isapi_rewrite/

Follow the download link and chose the standard installation package, 45 days trial version. A license has to be obtained from Helicon to continue to use it for production.

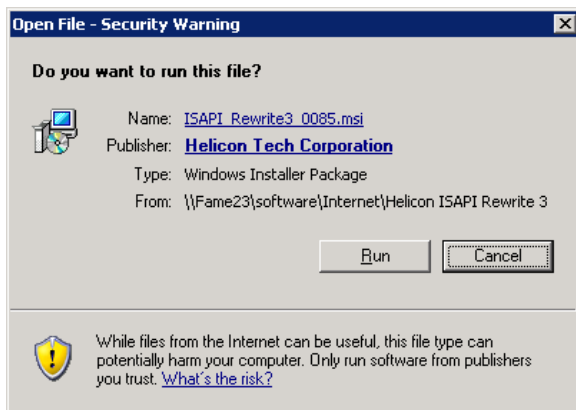
Install the Module using the windows installer. It installs in

C:\Program Files\Helicon\ISAPI_Rewrite3

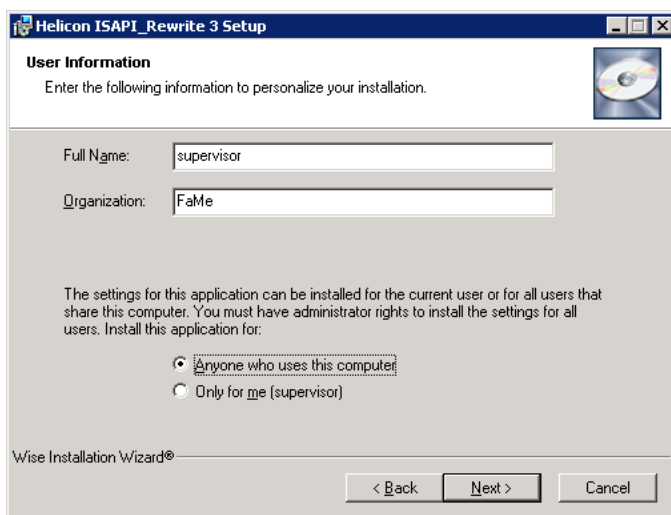
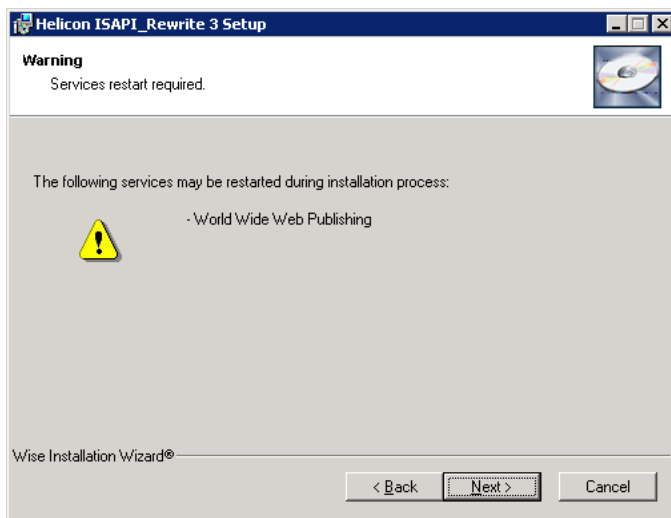
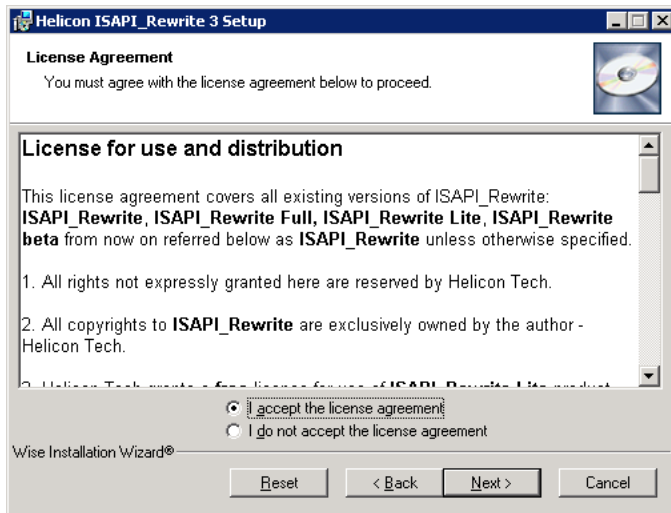
or wherever programs reside on your server.

Installation

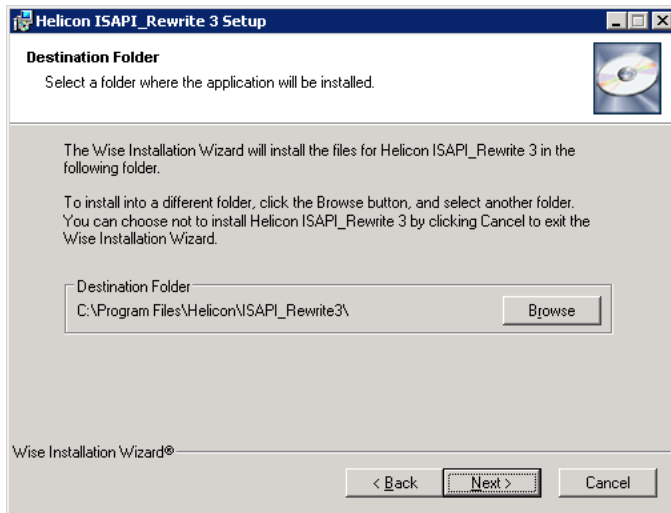
The installation process is illustrated on the following pages.



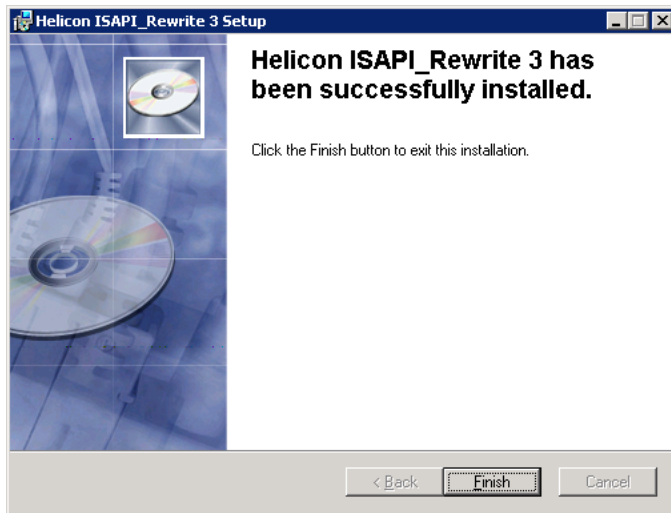
FaMe Installation Guideline TEST Server (I)



FaMe Installation Guideline TEST Server (I)



FaMe Installation Guideline TEST Server (I)



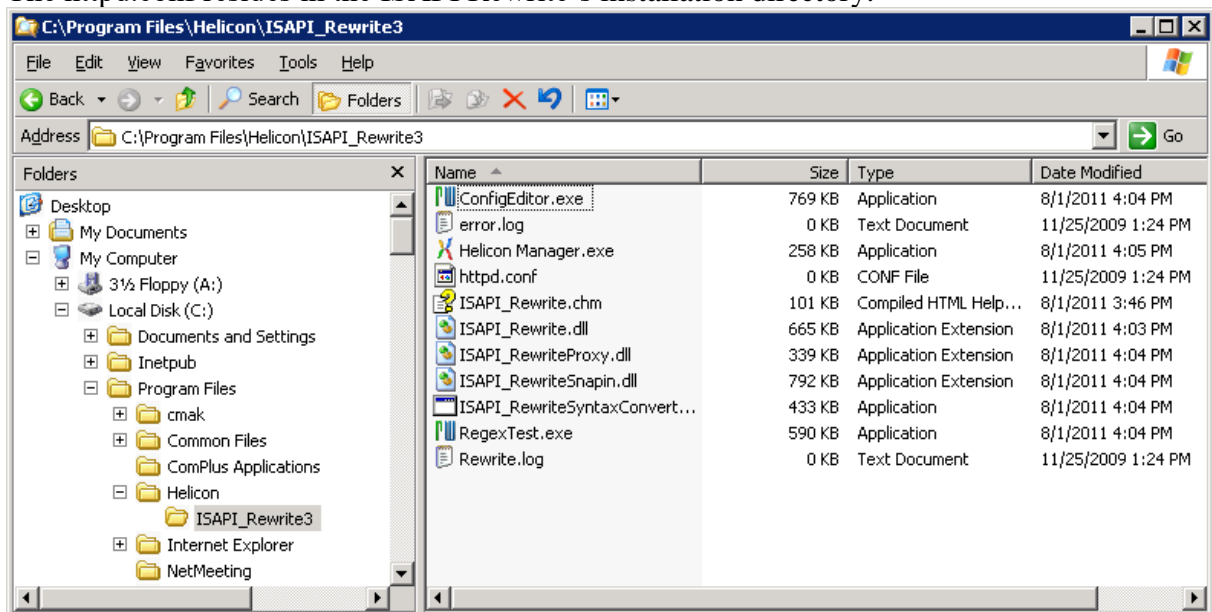
Configuration

This module can be configured generally using the `httpd.conf` file inside its installation directory. The file is supplied within the FaMe installation package and contains:

```
RewriteEngine on
RewriteRule ^/$ /<InstanceName>/html/ [R,NC,L]
RewriteRule ^/P?<Instance>/??$ /<InstanceName>/html/ [R,NC,L]
RewriteRule ^/<InstanceName>/fame/(.+) $
http://<WebServerName>:8080/<InstanceName>/fame/$1 [P]
```

Before deployment, the file has to be edited to reflect the correct virtual and especially remote path. The URL from the last row is the Oracle listener's port for the APEX gateway. Please change server, port, and paths as necessary.

The `httpd.conf` resides in the ISAPI Rewrite's installation directory:



Installing the license key for Helicon ISAPI Rewrite 3

The *Helicon ISAPI Rewrite 3* ISAPI filter is a commercial product that needs to be licensed, otherwise operation will stop after the expiry of the 45 day trial period. The installation of the key is done by adding 2 more parameters to the httpd.conf file:

```
RegistrationName = FaMe-FM
```

```
RegistrationCode = ---key---
```

After adding the parameters the IIS needs to be restarted for the registration to take effect. The actual key has to be obtained from Helicon via Internet (see above) or is supplied by FaMe.

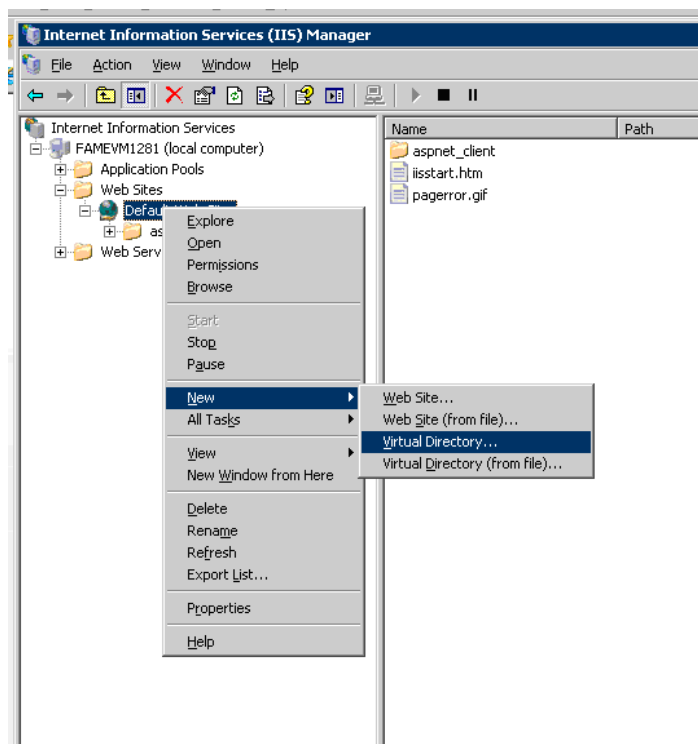
Setting up the FaMe application directory on the web server

The FaMe application needs a directory on a web server, containing at least these subdirectories:

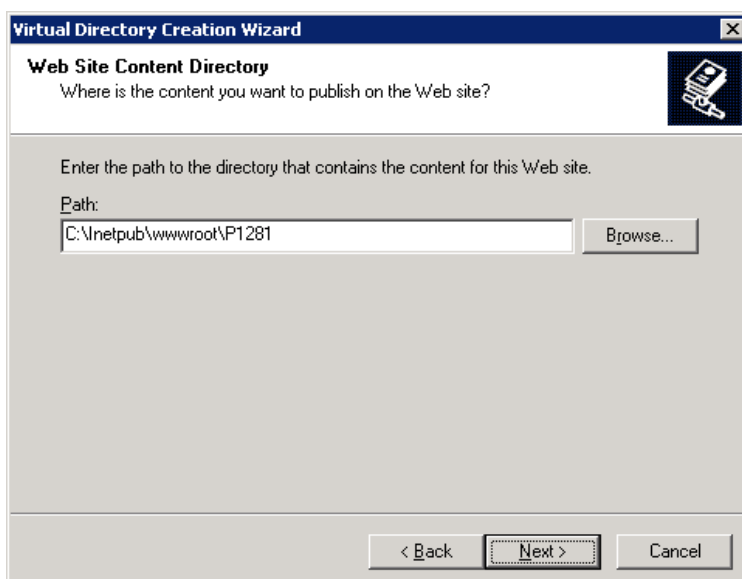
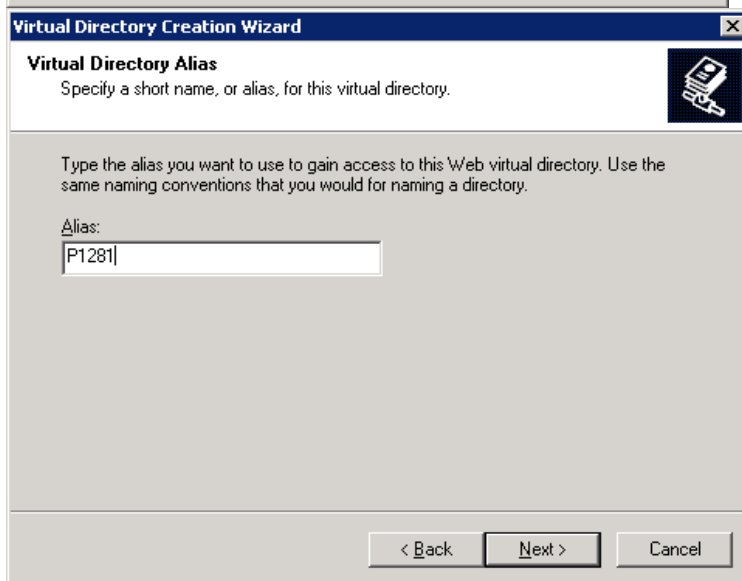
- html
- image
- js
- fame

The directories html, js, and image contain static content while the fame directory remains empty – it is only used for the setup of a virtual path reflecting the database.

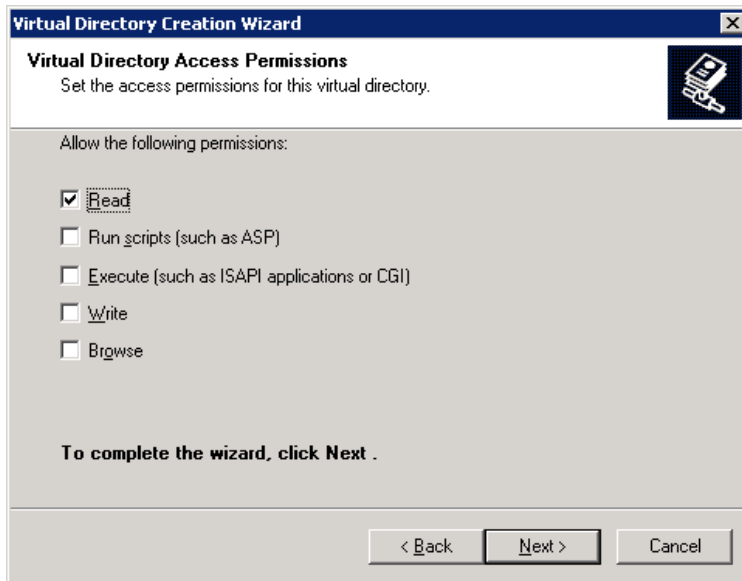
In the IIS manager, create a new virtual directory:



FaMe Installation Guideline TEST Server (I)

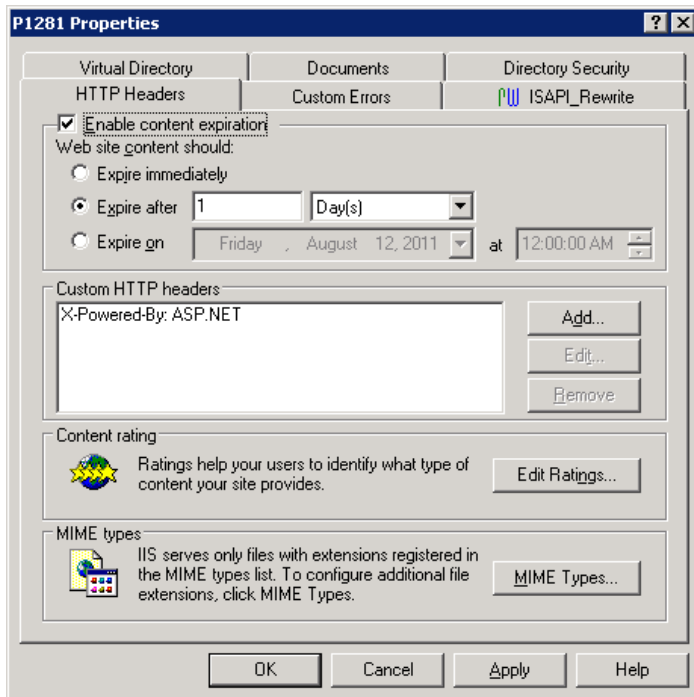
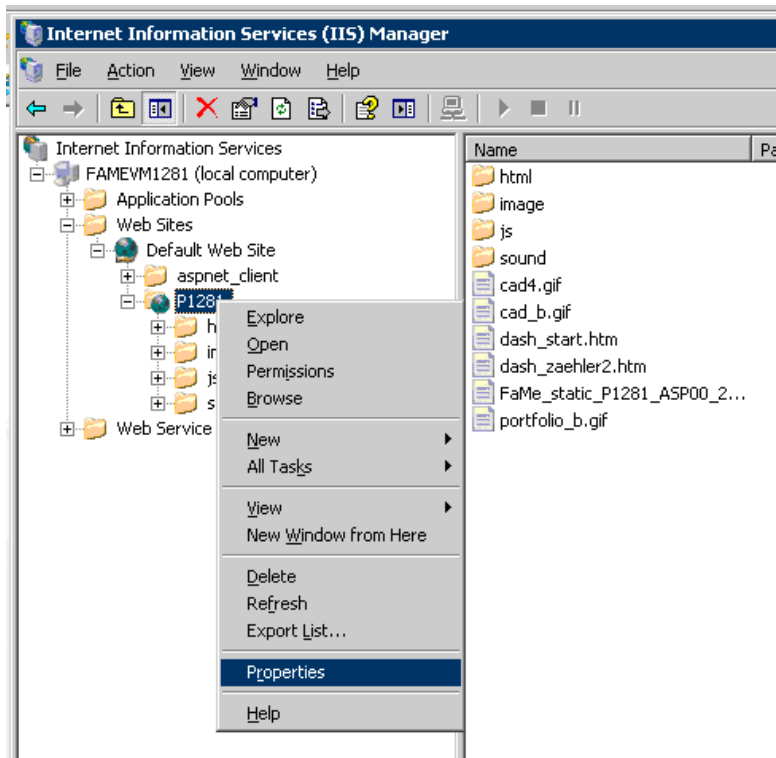


FaMe Installation Guideline TEST Server (I)



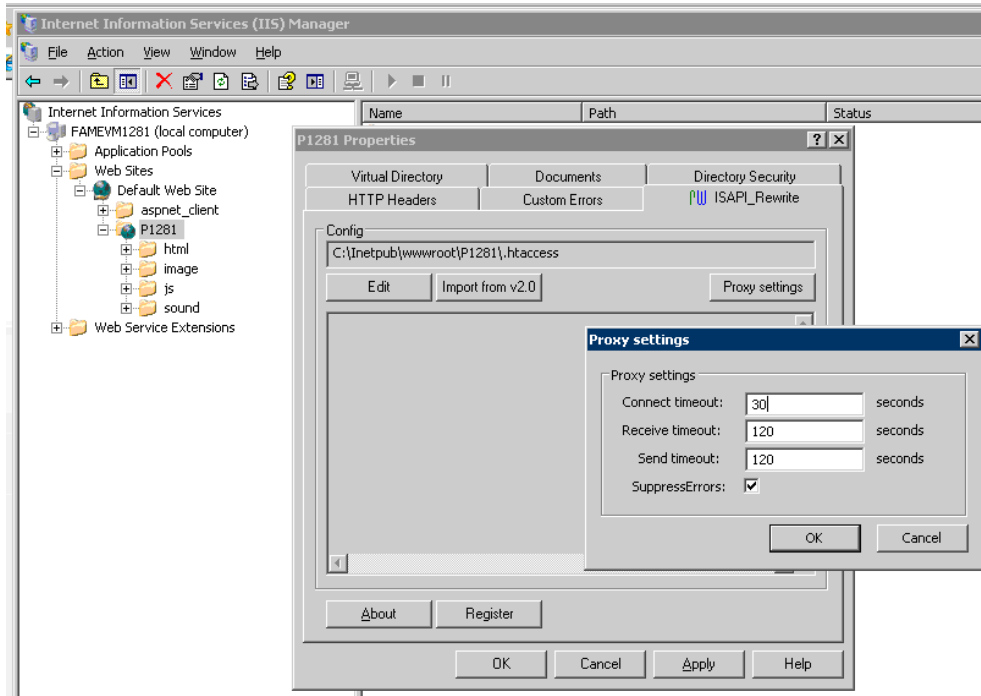
Now configure the virtual directory for static content:

FaMe Installation Guideline TEST Server (I)



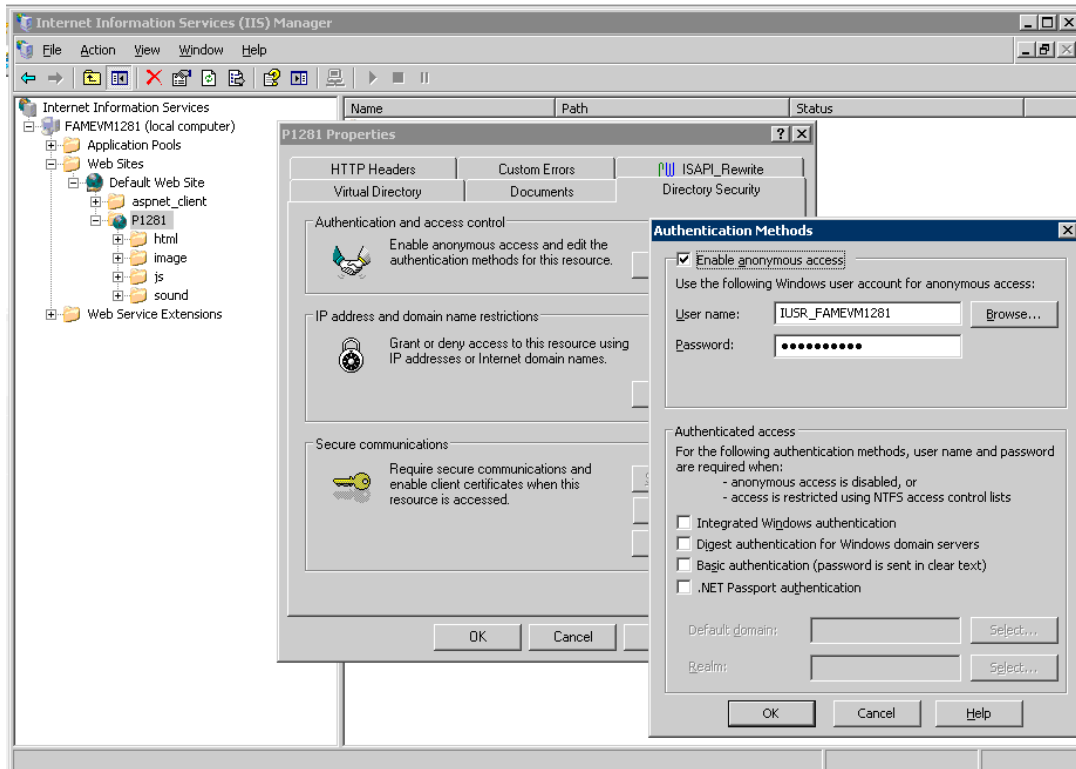
For performance, Expire after is set to 1 day for the static files.

FaMe Installation Guideline TEST Server (I)



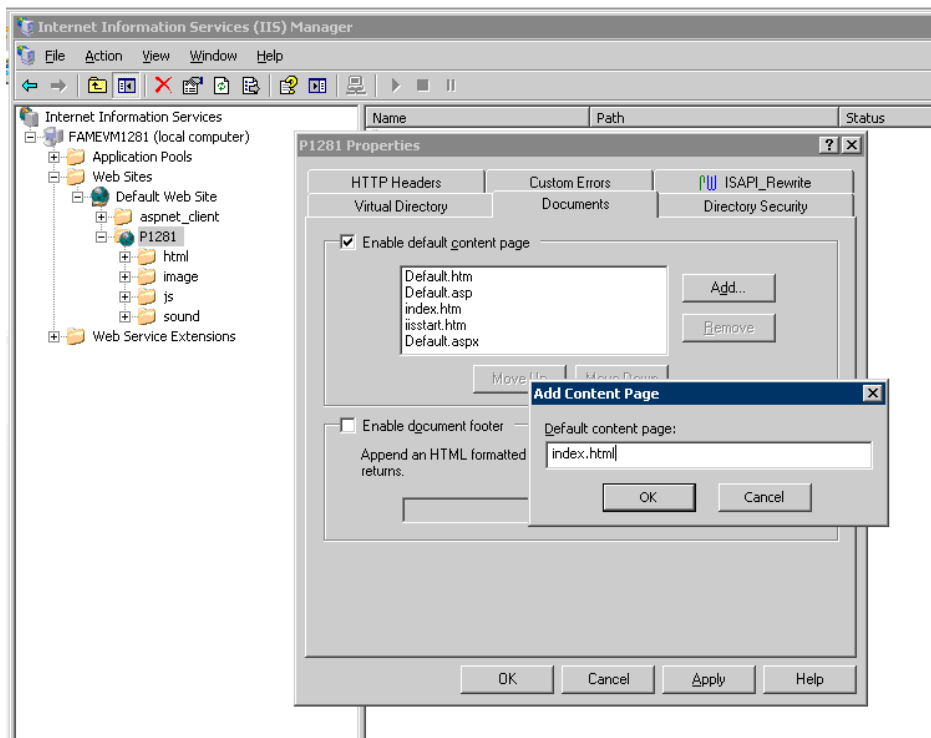
ISAPI Rewrite Proxy timeout has been modified: long-running reports may take longer than 30 seconds (the default); we chose 120 seconds

Enable anonymous access:



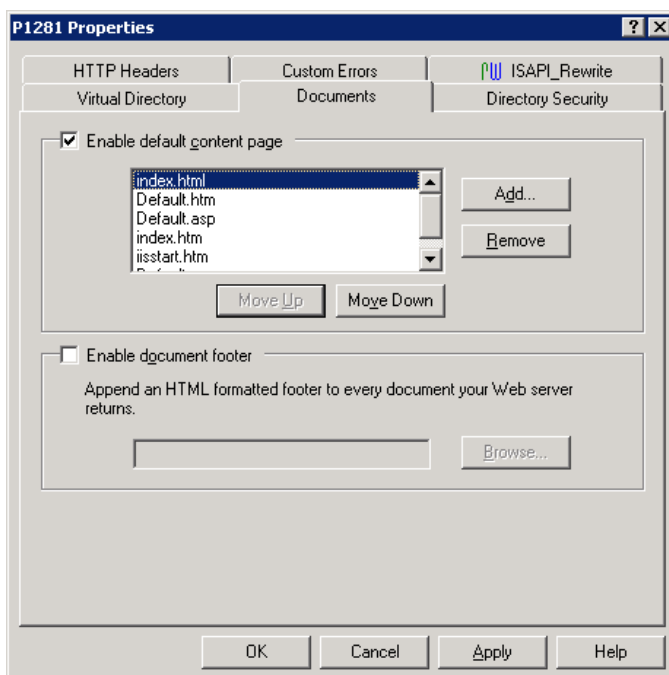
FaMe Installation Guideline TEST Server (I)

The “virtual directory” settings are left unchanged / on default.



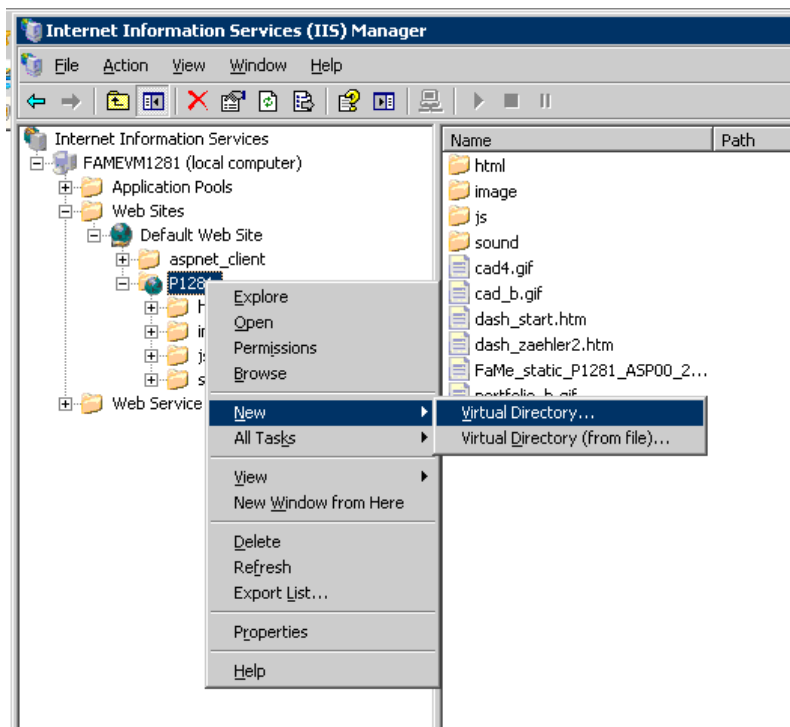
Our default documents are named “index.html”, so, this filename has to be added here. It’s OK to remove the other –default- filenames – but see next step.

Better: do not delete the other defaults but move “index.html” up to the top:

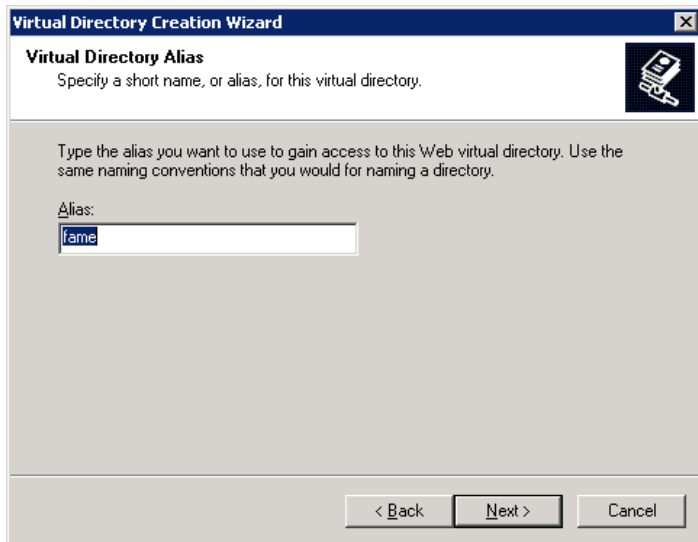


FaMe Installation Guideline TEST Server (I)

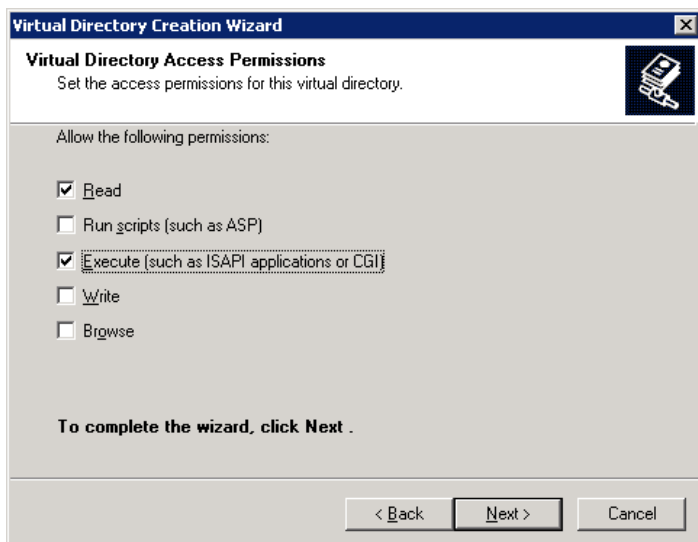
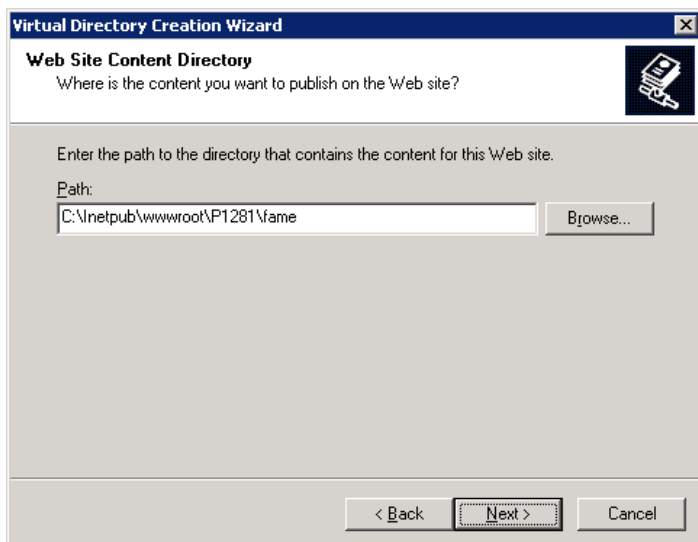
We need another virtual directory /<InstanceName>/fame that allows CGI scripting:



FaMe Installation Guideline TEST Server (I)

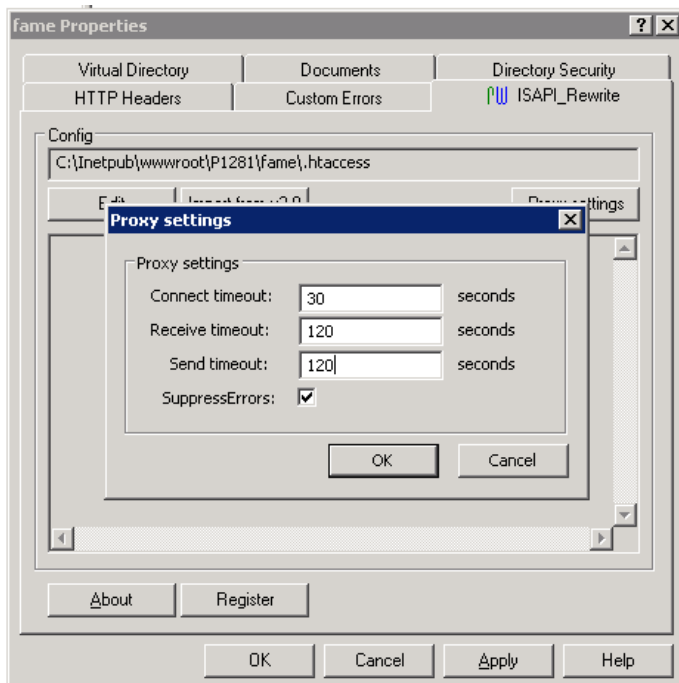
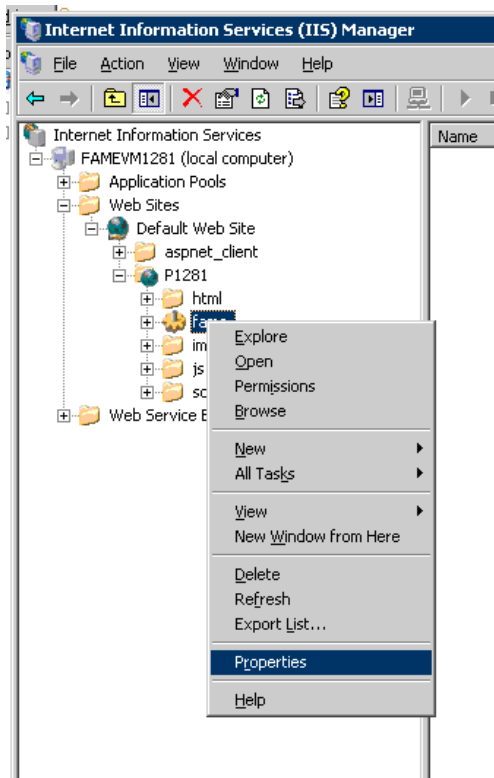


Note: this directory has to be created manually. It is empty. We need it to set up the virtual path /<InstanceName>/fame and allow CGI execution in this path. The Helicon ISAPI rewrite is configured to forward requests in this path to the database listener, but first the IIS must be set up to allow access to it, enabling CGI:



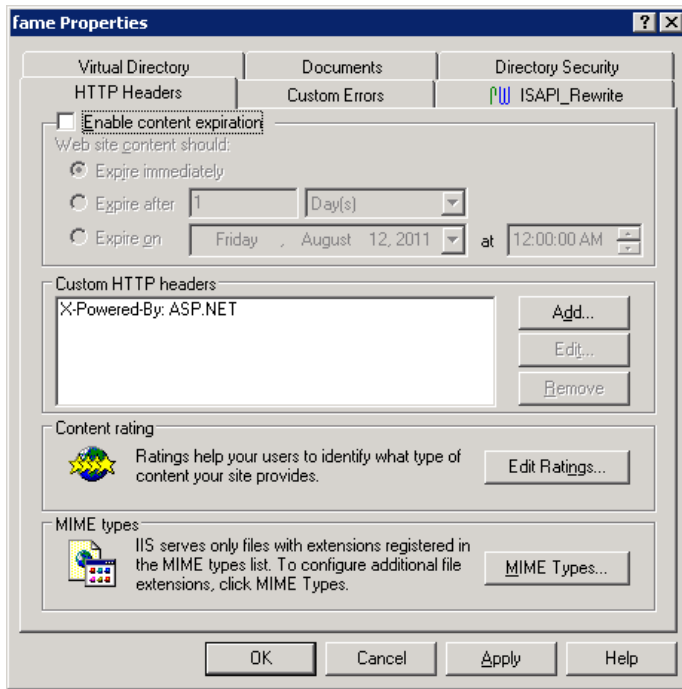
FaMe Installation Guideline TEST Server (I)

Configuration of /<InstanceName>/fame:

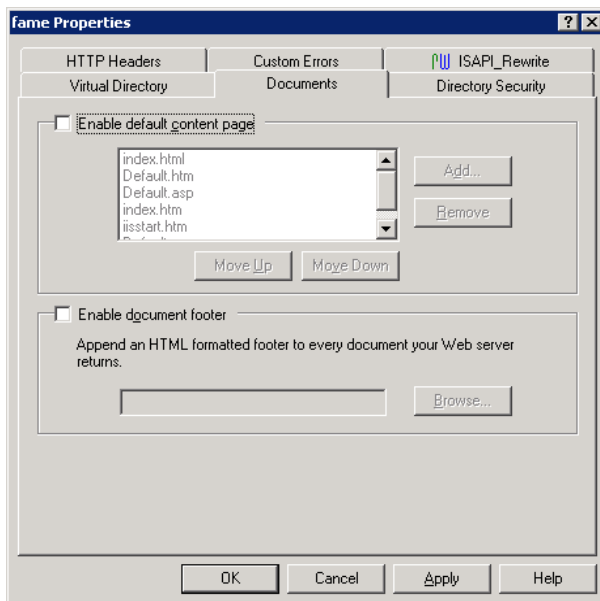


The proxy settings have to be set individually.

FaMe Installation Guideline TEST Server (I)



HTTP Headers: for the path /<InstanceName>/fame we do NOT want content expiration – that is handled by the FaMe application procedures.



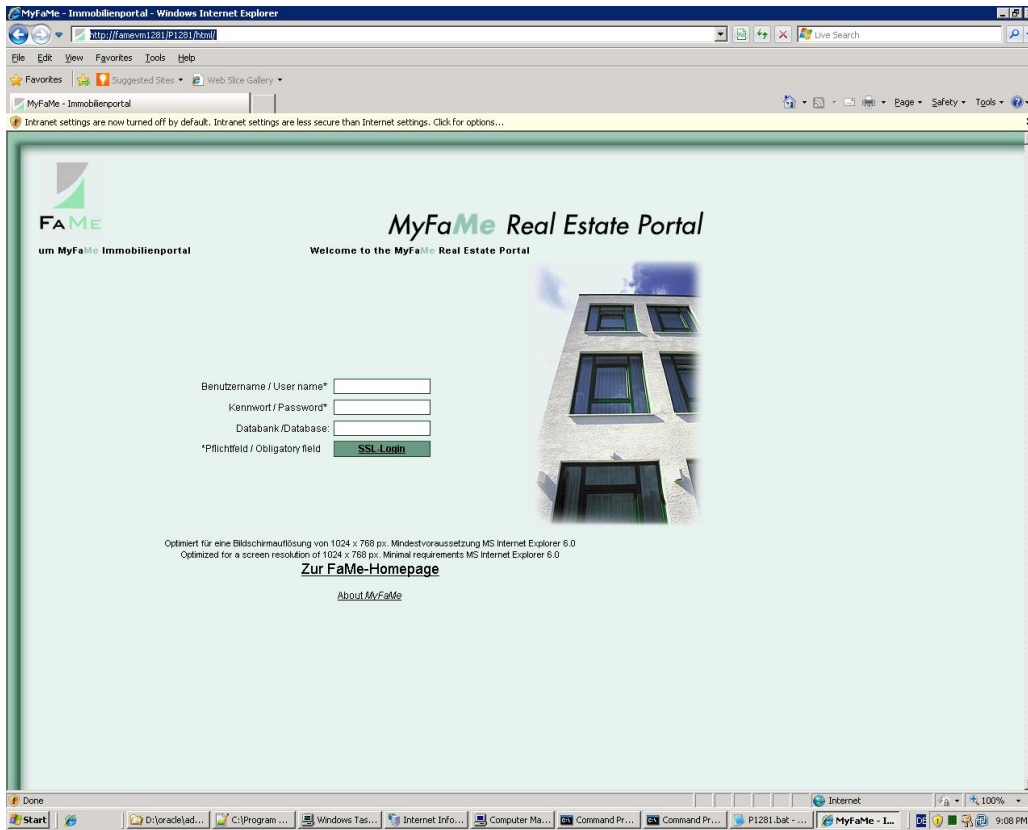
Documents in /<InstanceName>/fame: no default content page

Before the test of the main Page, install Oracle 11g and the FaMe Database as described in the Document : FaMe-FM5-InstallationOracle11gWindows-Rev1.2.01-20111013.doc

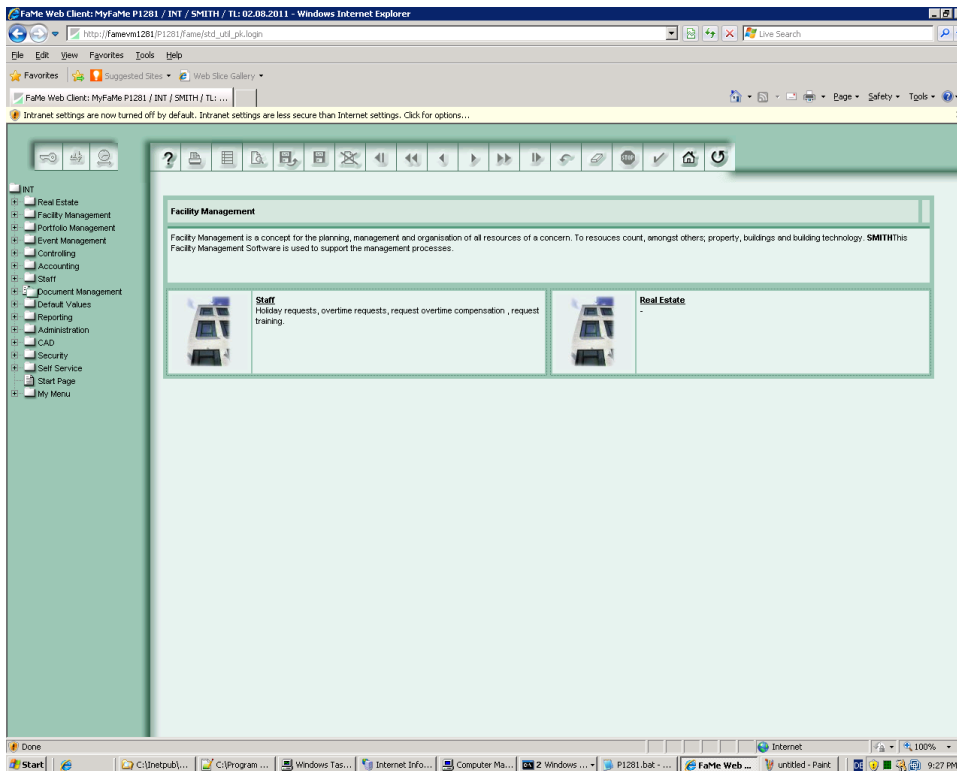
Now test the main page: it is important to *not* specify the entire path as shown, but to just enter <http://<WebServerName>/> - if the virtual path changes to <http://<WebServerName>/<InstanceName>/html/> the Helicon ISAPI Rewrite module works and applies the rules defined inside the httpd.conf:

FaMe Installation Guideline TEST Server (I)

<http://<WebServerName>/> jumps to <http://<WebServerName>/<InstanceName>/html/> and displays index.html:



Now try to log on as SMITH:



This is the intended result.

FaMe Installation Guideline TEST Server (I)

Try now to open a mask and to search for data:

The screenshot shows the FaMe web client interface in a browser window. The interface includes a navigation menu on the left with categories like Real Estate, Facility Management, Room, Workstation, Room Booking, Parking Mgmt., Service, Maintenance, Warranty, Cable Management, Access Management, Relocation Management, Cleaning, Fleet Management, Checklists, Booths, Catering, Hotel Management, IT Management, Airport Management, Hospital Management, Planned Activities, Portfolio Management, Event Management, Controlling, Accounting, Start, Document Management, Default Values, Reporting, Administration, CAD, Security, Self Service, Start Page, and My Menu. The main area displays a table with the following columns: Serial No., Building, Room No., Floor, Door Plate, Weekly Charge Rate, Real Estate No., and Zone. The table contains 20 rows of data.

| Serial No. | Building | Room No. | Floor | Door Plate | Weekly Charge Rate | Real Estate No. | Zone |
|------------|----------|----------|-------|--------------------------|--------------------|-----------------|------|
| 1 | 01 | 01 | 01 | ReceptionLobby | | MO-QA-DOH-1000 | 1 |
| 2 | 01 | 01 | 01 | ReceptionLobby | | MO-QA-DOH-1000 | 1 |
| 3 | 01 | 02 | 01 | AGM Office | | MO-QA-DOH-1000 | 1 |
| 4 | 01 | 03 | 01 | AGM Sekretary | | MO-QA-DOH-1000 | 1 |
| 5 | 01 | 04 | 01 | Meeting Area | | MO-QA-DOH-1000 | 1 |
| 6 | 01 | 05 | 01 | Designers Area | | MO-QA-DOH-1000 | 1 |
| 7 | 01 | 06 | 01 | Meeting Room | | MO-QA-DOH-1000 | 1 |
| 8 | 01 | 07 | 01 | Manager Room | | MO-QA-DOH-1000 | 1 |
| 9 | 01 | 08 | 01 | Manger Room | | MO-QA-DOH-1000 | 1 |
| 10 | 01 | 09 | 01 | Manager Room | | MO-QA-DOH-1000 | 1 |
| 11 | 01 | 10 | 01 | Support Staff Purchasing | | MO-QA-DOH-1000 | 0 |
| 12 | 01 | 10.1 | 01 | Hallway | | MO-QA-DOH-1000 | 1 |
| 13 | 01 | 10.1 | 01 | Hallway | | MO-QA-DOH-1000 | 2 |
| 14 | 01 | 11 | 01 | Electric Room | | MO-QA-DOH-1000 | 1 |
| 15 | 01 | 12 | 01 | Filing Room | | MO-QA-DOH-1000 | 1 |
| 16 | 01 | 13 | 01 | Copy Area / Pantry | | MO-QA-DOH-1000 | 1 |
| 17 | 01 | 14 | 01 | Manager Room | | MO-QA-DOH-1000 | 1 |
| 18 | 01 | 15 | 01 | Manager Room | | MO-QA-DOH-1000 | 1 |
| 19 | 01 | 16 | 01 | Female Restroom | | MO-QA-DOH-1000 | 1 |
| 20 | 01 | 17 | 01 | Male Restroom | | MO-QA-DOH-1000 | 1 |

Now we are done setting up the server.



FAME
FACILITIES MANAGEMENT
SOFTWARE GMBH

For further information please contact:

FaMe Facilities Management Software GmbH
An der Autobahn 43 a

FaMe Installation Guideline TEST Server (I)

D - 28876 Oyten

Phone: +49 4 207 / 91 10-0, Fax: +49 4 207 / 91 10-19